

Water Sampling

Partnership with Ducks Unlimited Canada

Starting in 2014, the Lower Souris Watershed Committee collected water samples for DUC. DUC is performing a study on the Souris River which is expected to be completed in 2019. Pascal Badiou, Ph.D. is the lead researcher for the study pictured below.

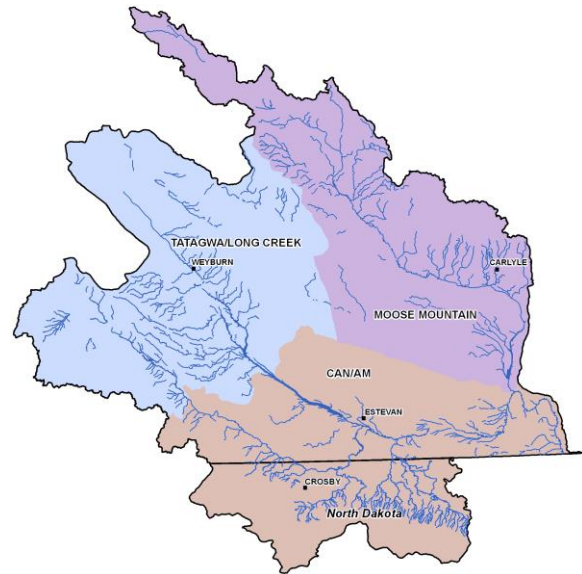


Sampling and Study Locations

Within the Lower Souris Watershed, there are three sub-watersheds which are monitored

- Antler Creek Watershed
- Lightning Creek Watershed
- Pipestone Creek Watershed

There are also 3 sub-watersheds in North Dakota and another 3 in Manitoba. The Souris River Watershed is hyper-eutrophic, indicating high nutrient levels and therefore high biological activity.



Goals and Purpose

The Souris River has a large (~61,000 km²) watershed and agricultural drainage across the area is increasing the nutrient impact on the water system. This project will complete a unified wetland inventory of the Souris River Watershed. With the full inventory, there will be an examination between current and historical wetland existence and the water quality change.

